

ULTRA LOW BED

VERSATILE PERFORMANCE & TRAVEL RANGE



USER MANUAL

Ultra Low Bed

4 Function Ultra Low Bed 7" #**ULB7/30**

4 Function Ultra Low Bed 7" With Expandable Width #**ULB48-X-7/30**

IMPORTANT: CHECK THE LABEL ON THE BED FRAME FOR THE CORRESPONDING MODEL NUMBER




Table of Contents

Introduction & Product Features	3
Parts List And Description	4
Castors – Operation	5
Length Extension Frame Installation	5-6
Headboard & Footboard Installation.....	6-7
Bed Width Extension.....	8
Bed Length Extension	9
Mattress Retainer.....	9-10
Bumper Bar Installation	10
Side Rails – Installation And Operation	10
Patient Remote Control – Operation.....	11
IV Pole Socket.....	11

Introduction

The **MEDACURE 4 FUNCTION ULTRA LOW BED** is a fully electric bed for Long Term Care, Hospital & Home Care settings. It has a low position of 7" and 4 patient position functions to enhance the quality of care and for ultimate comfort. The **ULTRA LOW BED** uses sophisticated motors to control all functions and has a weight capacity of 500 lbs. (ULB7/30) & 550 lbs. (ULB48-X-7/30). The bed comes standard with a patient remote handset and is a Class II Medical Device. The plug and the motors are IP43 rated.

Durable and built to last with all steel construction and removable head & foot boards. The **ULTRA LOW BED** beds are sturdy with multi-functional features and an attractive upscale design that will enhance the décor of any room.

		
<p>Extensive Travel Range From 7" - 30"</p>	<p>High Weight Capacity: 500 - 550 Lbs.</p>	<p>4 Function - Hi/Lo, Head, Foot & Auto Contour Position</p>

PRODUCT FEATURES

- Patient remote hand pendant for all 4 positions
- Travel Range: High: 30" / Low: 7"
- Length extends from 80" – 88"
- Expandable width from 36" – 42" – 48" (on all bed models with 'X' in the model #)
- 8 x 3" casters: 4 pcs. swivel & 4 pcs. locking casters
- IV pole mount on the 2 head corners of the bed frame
- Durable rectangle tube bed deck
- Interchangeable head/foot boards
- Durable 1 piece reinforced steel frame
- Bed includes 4 corner mattress retainers, 1 on each corner (on all bed models without 'X' in the model #)
- Bed includes 8 bed side mattress retainers (Only for Model # ULB48-X-7/30)
- Bed includes 1 bumper bar on the head of the bed

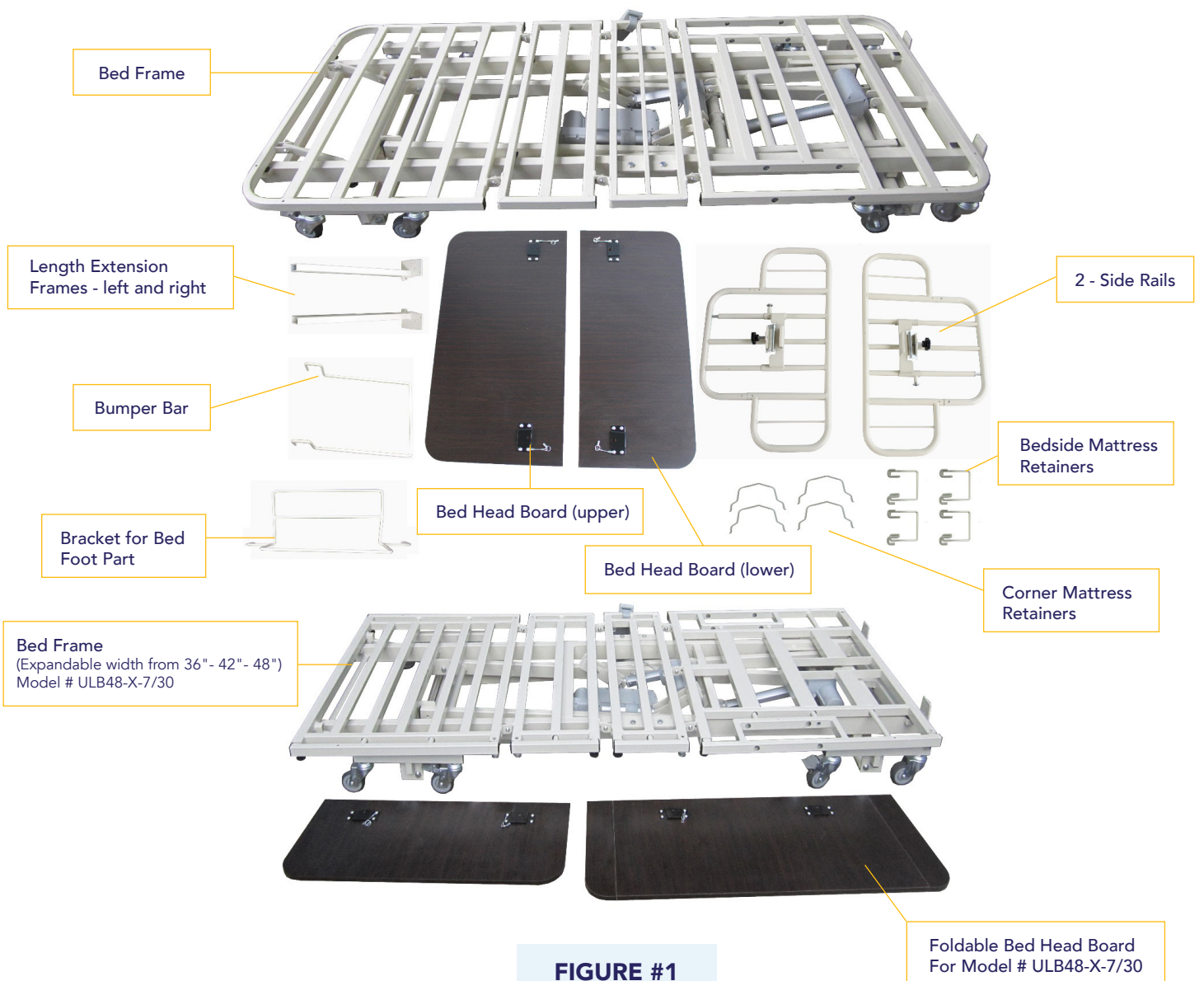
ACCESSORIES

MODEL	Length Extension	Width Expansion	Bed Side Mattress Retainer	Corner Mattress Retainer	Quick Release Head & Foot Boards	Quick Release Foldable Head & Foot Boards
ULB7/30	✓	x	✓	x	✓	✓
ULB48-X-7/30	✓	✓	✓	✓	x	x

WEIGHT CAPACITY: 500 LBS. (ULB7/30) 550 LBS. (ULB48-X-7/30)

Parts List & Description

IMPORTANT: Read this manual completely before setting up or operating this system and keep in a safe place for future reference. To avoid injury and for maximum safety, this system should only be installed by an authorized technician or dealer representative.



Operations & Installations

1. CASTORS - OPERATION

There are 4 pcs. locking casters and 4 pcs. swivel casters per set.

Step on the locking pedal (lower) to activate the locking position and step on the unlocking pedal (upper) to deactivate the locking system. See Figure # 2 & 3.



FIGURE #2

Unlocking Status



FIGURE #3

Locking Status

2. LENGTH EXTENSION FRAME - INSTALLATION

2.1 Insert extension frame (left) & extension frame (right) into the 60 x 30 mm rectangular bedframe tube. See Figure # 4

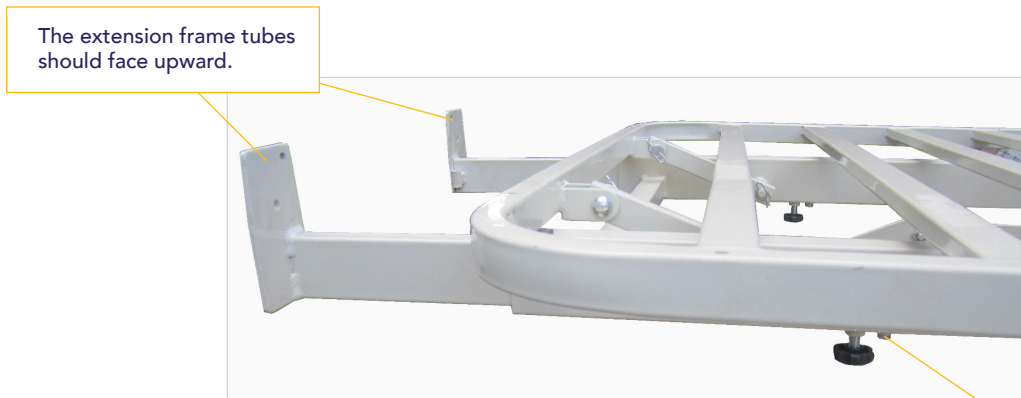


FIGURE #4

Loosen this bolt first, then insert the extension frame and tighten the bolt.

2.2 Install bracket for bed foot part as per Figure # 5



FIGURE #5

3. HEAD AND FOOT BOARD - INSTALLATION

3.1 Quick Release Head and Foot Board Installation

3.1.1 HEADBOARD (higher piece) – insert the brackets on the back of the headboard into the bed frame brackets as noted in Figure # 6.



Align the mounting holes

FIGURE #6

3.1.2 Insert the security bolt through the holes on the board and frame brackets as noted in Figure #7.



PLEASE NOTE: FOOTBOARD

For the bed with expandable length feature, you will need to install the bed extension rods first before attaching the footboard.

FIGURE #7

3.1.3 FOOTBOARD (lower piece) Repeat steps 3.1.1 and 3.1.2 for installing the foot board (lower piece).

3.2 Quick Release Foldable Head and Foot Board Installation (for Model # ULB48-X-7/30)

3.2.1 Repeat steps 3.1 for installing the head and foot board

3.2.2 Foldable bed head board installation as noted figure # 8



Unfolded Position ^

FIGURE #8



Folded Position ^

4. OPERATION FOR BED SURFACE EXTENSION FRAME (FOR MODEL # ULB48-X-7/30)

4.1 First, loosen the "Locking Bolt". Then, pull the "Pulling Button" with one hand and pull out the extension frame until it clicks into your desired location hole (see 4.2 below). Tighten the "Locking Bolt" to lock the extension frame in place. See figure # 9.

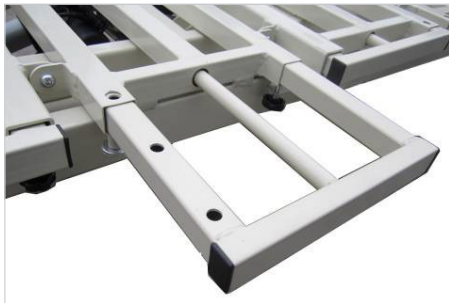


FIGURE #9

Pulling Button

Locking Holes

4.2 IMPORTANT NOTE: There are 3 location holes on each extension frame for 3 width adjustment settings - 36", 42" and 48" widths. There are 4 separate extension frames on each side of the main frame. Repeat the above method in 4.1 to achieve the desired width and then tighten the "Locking Bolt" to lock the extension frame in place. See Figure # 10.



**THIS IS FOR MODEL
ULB48-X-7/30**

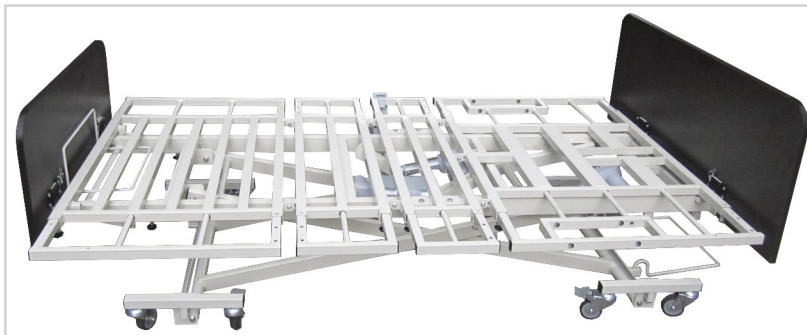


FIGURE #10

5. OPERATION FOR BED FOOT LENGTH EXTENSION FRAME

Loosen the knob on the bed frame, and pull out the extension frame. Tighten the knob until the ideal length is selected, as per Figure # 11.



FIGURE #11

6. MATTRESS RETAINER

6.1 Corner Mattress Retainer Installation

Each corner of the bed frame has two mattress retainer installation holes. Insert the mattress retainer as noted in Figure # 12 (for Model # ULB7/30)



FIGURE #12

Installations

6.2 Bed Side Mattress Retainer Installation (for Model # ULB48-X-7/30)

Hang the bed side mattress retainer onto the tube as noted in Figure # 13 (for model ULB48-X-7/30)



FIGURE #13

7. BUMPER BAR INSTALLATION

Insert the two ends of the bumper bar into the two holes on the tube (see figures 14 and 15)



FIGURE #14



FIGURE #15

8. SIDE RAILS AND ASSIST BARS

8.1 Medacure has multiple side rail and assist bar options. Please contact your dealer or authorized representative for details.

For rail entrapment guidelines please visit the [FDA.Gov](https://www.fda.gov) website

9. PATIENT REMOTE HAND PENDANT - OPERATION

Ensure the power cord is connected. Patient can easily control all 4 bed functions by using the remote control. This includes adjusting the entire bed height, raising & lowering the head & foot areas. Press the selected button until you reach the ideal position - see figure # 16.

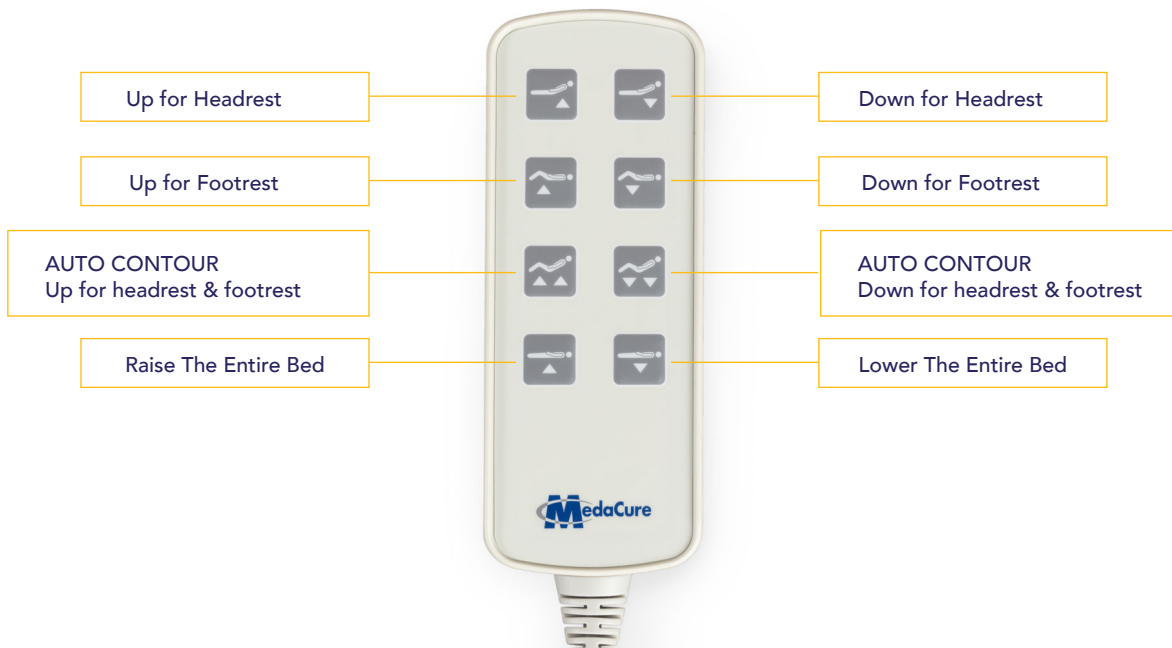


FIGURE #16

10. IV POLE SOCKETS

The bed frame has 2 sockets to insert an IV Pole. Each corner of the bed head frame has one installation hole for an IV Pole. Insert the IV Pole into any one of the sockets and adjust to your desired height